

REVISION RECORD

REV	ECN	DESCRIPTION	DRFT	DATE
-----	-----	-------------	------	------

NOTES1:

UL Standard

- 1.Rated voltage/current : 300V / 10A
- 2.Withstanding voltage : AC1600V/1Min.
- 3.Torque value : M2 , 1.77Lb.in
- 4.Wire range : 26~16AWG

IEC Standard

1. Pollution degree	2	2	3
Overvoltage category	II	III	III
Rate impulse voltage(KV)	2.5KV	2.5KV	2.5KV
Rate voltage(V)	400V	200V	160 V
Rate current(A)	17.5A		

- 2.Torque value : M2 , 0.2N·m
- 3.Wire range : 0.2~1.5mm²

NOTES2:

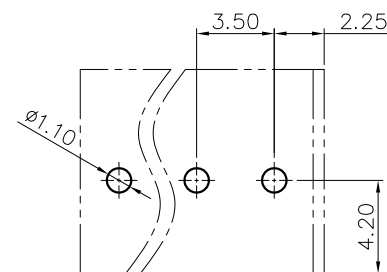
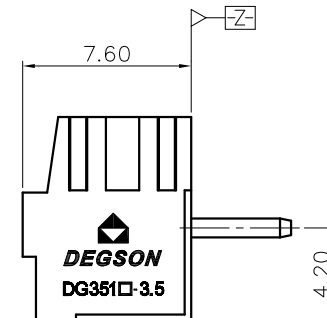
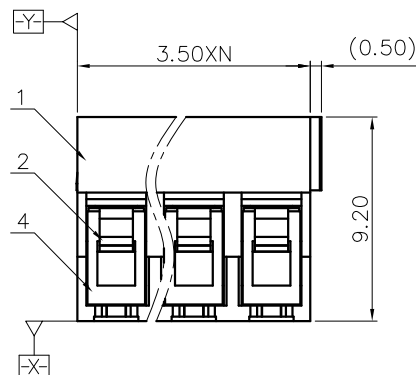
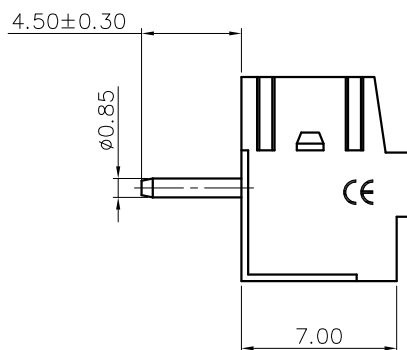
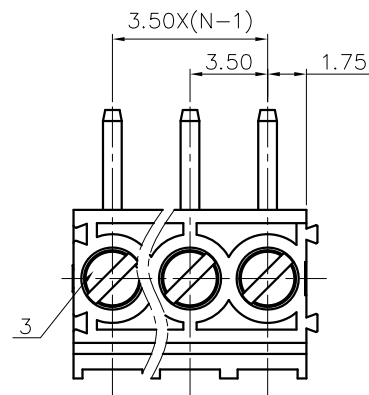
- 1.Dimension shall be interpreted per ASME Y14.5-2009
- 2.Pitch : 3.5mm, Poles : N=02~24P
- 3.Stripping length : 5mm
- 4.Operating temperature: -40°C~+105°C
- 5.Undimensioned tolerances:

Pitch Range In mm		Nominal Dimension Range In mm				0.1/10
TO	Over	TO	Over	TO	Over	
6	10	10	30	60	100	150
6	10	24	30	60	100	150
±0.15	±0.20	±0.30	±0.30	±0.50	±0.70	±1.00
±0.20	±0.30	±0.30	±0.50	±0.70	±1.00	±1.30
						±2°

6.RoHS Compliance

DG351R - 3.5 - XXP - 1Y - 00A (H)
(Series No.) (Pitch) (Poles) (Single Pitch) (Color):1.(Grey)
2.(Blue)
3.(Black)
4.(Green)
5.(Orange)
6.(Red)
7.(Transparent)
8.(Yellow)
9.(White)

DETACHED LISTS	PART NO.:	/	NINGBO DEGSON ELECTRICAL CO., LTD		
	APPD:	/	NAME: DG351R-3.5-XXP-1Y-00A(H)		
	CHKD:	/	TITLE: CUSTOMER DRAWING		
	DRFT:	/	DRAWING NO.:	/	REV
	THIRD ANGLE PROJECTION		DO NOT SCALE DRAWING	SCALE	1/2



PCB LAYOUT