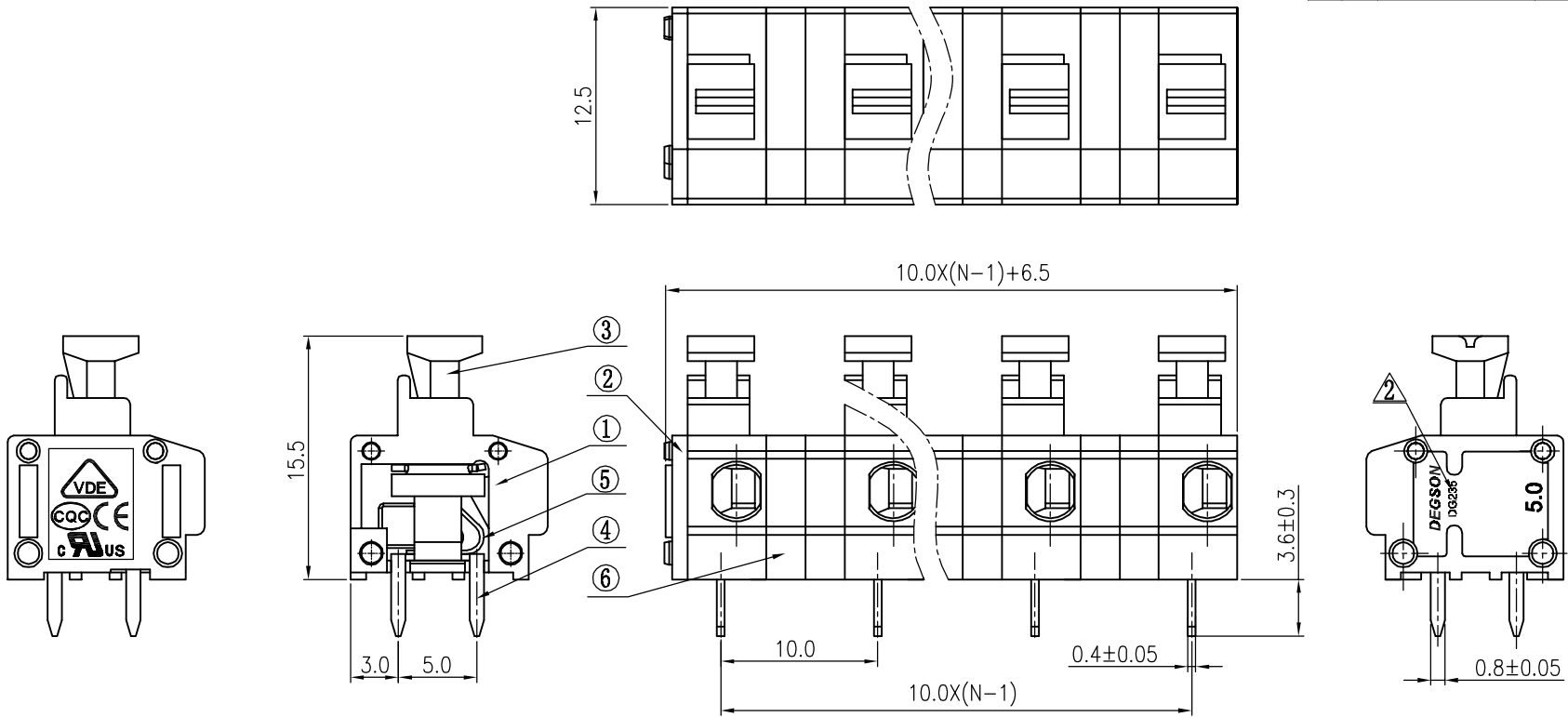
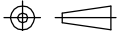


REVISION RECORD				
REV	ECO	DESCRIPTION	DRFT	DATE
⚠		图面更新	WF	01/31/07
⚠		修改刻字	LJH	10/30/08
⚠	10-0033	修改参数	ZXX	10/04/10



- Notes:
1. Pitch:10.0mm , Poles:2-XXP
 2. Rated voltage/current:UL 300V/5A
VDE 750V/15A ⚠
 3. Operation temperatures:-40℃~+105℃
 4. Withstanding Voltage:AC2000V/1Min
 5. Insulation Resistance:5000MΩ/DC1000V
 6. Wire Range:20~18AWG, 0.2~1.5mm² (str) ⚠
0.2~2.5mm² (sol)
 7. Undimensioned Tolerances:

Pitch range in mm			Nominal dimension range in mm						
to 6	over 6 to 10	over 10 to 24	to 30	over 30 to 60	over 60 to 100	over 100 to 150			
±0.10	±0.15	±0.25	±0.2	±0.3	±0.5	±0.7	±1.0	0.05/10	

6	DG235-Calpboard	3008H0Y01A (H)	2 (XX-1)	PA66	UL94V-0	
5	DG235-5.0-Spring	X000000140 (H)	XX	Stainless Steel		
4	DG235-5.0-Pin header	3008B00010 (H)	XX	Phosphor Bronze	SnCe plated	
3	DG235-5.0 Button	3008D0Y01A (H)	XX	PA66	UL94V-0	
2	DG235-5.0 Cover	3008C0Y01A (H)	1	PA66	UL94V-0	
1	DG235-5.0 Housing	3008A0Y01A (H)	XX	PA66	UL94V-0	
ITEM	NAME OF PART		NO. OF PART	Q'TY	MATERIAL	NOTES
DETACHED LISTS	<div>← MM (INCH) →</div>		DFTO <i>Home</i>		DATE 05/04/06	
	TOLERANCES EXCEPT AS NOTED		CHKD		DATE	
			MFO		DATE	
			APPVL		DATE	
	MM		±		NAME DG235-10.0-XXP-1Y-00A(H)	
	.0 ±		±			
	.00 ±		±			
	.000 ±		±		DRAWING NO. DG235-10.0-E03 /PART NO.	
	ANGLES ± 1°		G.E :			
	FINISH :		SIZE A3			
		SCALE : 1:1		REV T3 10/04/10		
THIRD ANGLE PROJECTION		DO NOT SCALE DRAWING		SHEET 1 OF 1		