

INSULATING MATERIAL ACCESSORIES FOR BOXES, CONDUITS AND CABLES

TECHNICAL CHARACTERISTICS

Standard: EN 50086-1 (CEI 23-39); EN 50086-2-1 (CEI 23-54); EN 50086-2-2 (CEI 23-55) (when applicable); IEC EN 61386-1; IEC EN 61386-21; IEC EN 61386-22 (when applicable); EN 50262 for cable glands with metric thread; DIN 40430 for cable glands with PG thread
Permanent application and installation temperature:
Min -25°C Max +60°C

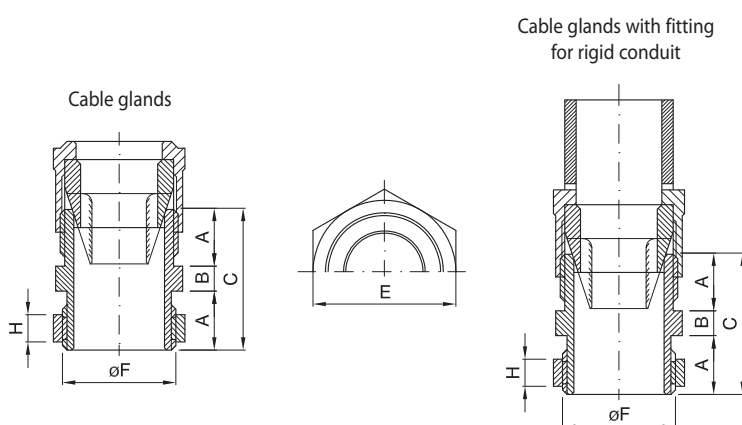
Insulation resistance: > 100 MΩ a 500 V
IP degree of protection: IP 66; IP 68
Dielectric rigidity: 2,000 V a 50 Hz
Glow Wire Test: 650°C (cable glands)
850°C (couplings)

BEHAVIOUR WITH CHEMICAL AND ATMOSPHERIC AGENTS

	Saline solution	Acids		Bases		Solvents				Mineral oil	UV rays
		Concentrated	Diluted	Concentrated	Diluted	Hexane	Benzol	Acetone	Ethyl alcohol		
52 Cable glands	Resistant	Limited resistance	Limited resistance	Resistant	Resistant	Resistant	Resistant	Resistant	Resistant	Resistant	Limited resistance
50 AC Couplings and cable glands	Resistant	Limited resistance	Limited resistance	Resistant	Resistant	Resistant	Resistant	Resistant	Resistant	Resistant	Limited resistance

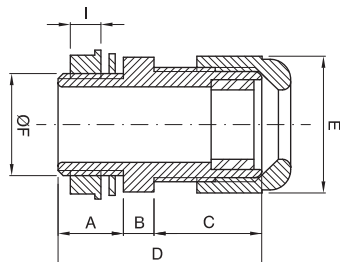
DIMENSIONAL TABLES

PG PITCH CABLE GLANDS - IP66



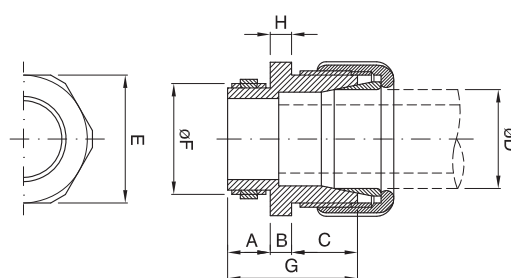
CODE	A	B	C	E	H	øF
GW 52 001	8	3	19	16	3.5	12.5
GW 52 002	9	3.5	21.5	19	4	15.2
GW 52 003	10.5	4	25	22	5	18.6
GW 52 004	12	4.5	28.5	24	5.5	20.4
GW 52 005	13	5	31	27	6	22.5
GW 52 006	14	6	34	32	6.5	28.3
GW 52 007	15	8	38	41	8	37
GW 52 008	18	9	45	55	9	47
GW 52 009	20	9	49	62	10	54
GW 52 010	22	9	53	66	14.5	59.3

METRIC PITCH CABLE GLANDS - IP68



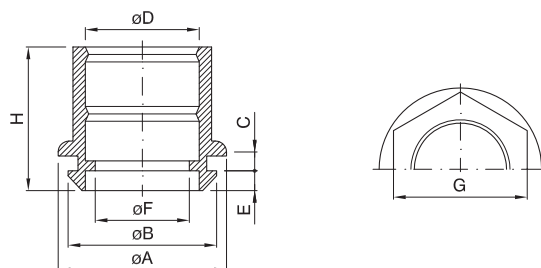
CODE	A	B	C	D	E	I	øF
GW 52 042	8	5	14	27	17	5	M12 x 1.25
GW 52 043	15	5	18	38	22	5	M16 x 1.5
GW 52 044	13	6	22	41	27	6	M20 x 1.5
GW 52 045	14.5	6	22	42.5	33	7	M25 x 1.5
GW 52 046	15	7	27	49	42	8	M32 x 1.5
GW 52 047	18	9	33	60	54	8	M40 x 1.5
GW 52 048	14.5	9	34.5	58	61	8	M50 x 1.5
GW 52 049	25.5	7.8	44	77.3	75.7	11	M63 x 1.5

CONDUIT/BOX COUPLINGS - IP66



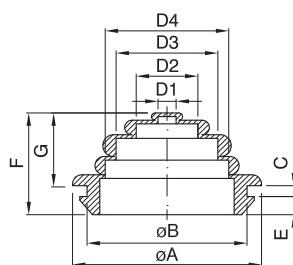
CODE	A	B	C	G	H	øD	øF	E	Pg
GW 50 415	11	4	12.5	27.5	6	16	20	23	13.5
GW 50 416	12.5	5	15.5	33	6.5	20	23	29	16
GW 50 417	12.5	5	18.5	36	8	25	29	40	21
GW 50 418	14	6	22	42	9	32	37	54	29
GW 50 419	16	8	26	50	10	40	48	59	36
GW 50 420	18	10	30	58	14.5	50	54	64	42

CONDUIT/BOX COUPLINGS - IP44



CODE	øA	øB	C	øD	E	øF	G	H
GW 50 421	31	23	2	16	4.5	12	22	26
GW 50 422	31	23	2	20	4.5	16	24	26
GW 50 423	36.5	29	2.5	20	4.5	16	24	32
GW 50 424	36.5	29	2.5	25	4.5	21	30	32
GW 50 425	45	37	3	32	5	28	36	40
GW 50 426	52	37	3	40	5	31	46	50
GW 50 427	62	48	3.5	50	5	41.5	55	52

CABLE ENTRIES - IP55



CODE	øA	øB	C	E	F	G	D1	D2	D3	D4
GW 50 428	23.5	19.5	3	2.5	14	8.5	4.5	13.5	16.5	-
GW 50 429	29	23	2	4.5	19.5	13	4.5	13.5	19	-
GW 50 430	34.5	29	2.5	4.5	21	14	4.5	15	24	-
GW 50 431	44	37	3	5	23	15	4.5	19	31	-
GW 50 432	56	48	3.5	5.7	29.5	20	4.5	19	31	39

METALLIC CABLE GLANDS AND ACCESSORIES

TECHNICAL CHARACTERISTICS

Standards: EN 50262 for cable glands with metric thread
DIN 40430 for cable glands with PG thread

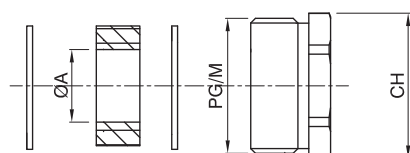
Permanent application and installation temperature:
Min -30°C Max +100°C

Material: nickel-plating brass

Degree of protection: IP65; IP68 at 3 bar

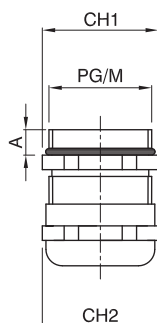
DIMENSIONAL TABLES

CABLE GLANDS PG/M IP65



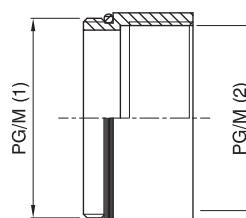
CODE	MATERIAL	PG/M	CH	SEAL 1 Ø A	SEAL 2 Ø A	SEAL 3 Ø A	SEAL 4 Ø A
GW 76 837	plastic	PG11	19	7.5	10	12.5	
GW 76 839	plastic	M20	20	4	7	10	13
GW 76 841	metallic	PG11	18	7.5	10	12.5	
GW 76 842	metallic	PG13.5	20	7.5	10	12.5	
GW 76 843	metallic	PG16	22	7.5	10	12.5	15
GW 76 844	metallic	PG21	28	10	13	16	19
GW 76 845	metallic	PG29	37	18	21	24	27
GW 76 846	metallic	PG36	47	24	27	30	33
GW 76 847	metallic	PG42	54	30	33	36	39
GW 76 848	metallic	M20	20	4	7	10	13
GW 76 849	metallic	M25	25	8.5	11.5	14.5	17.5
GW 76 850	metallic	M32	32	16	19	22	25
GW 76 851	metallic	M40	40	23	26	29	32
GW 76 852	metallic	M50	50	30	33	36	39

METAL CABLE GLANDS PG/M - IP68



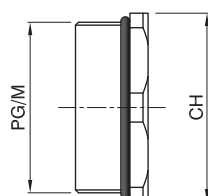
CODE	PG/M	CH1	CH2	A
GW 76 825	PG11	20	20	6
GW 76 826	PG13.5	22	22	6.5
GW 76 827	PG16	24	24	6.5
GW 76 828	PG21	30	30	7
GW 76 829	PG29	40	40	8
GW 76 830	PG36	50	50	9
GW 76 897	PG42	60	60	9
GW 76 896	M16	20	20	6
GW 76 831	M20	24	24	6.5
GW 76 832	M25	30	30	7
GW 76 833	M32	40	40	8
GW 76 834	M40	50	50	9
GW 76 835	M50	60	60	9

METAL ENLARGING ADAPTERS PG/M - IP65



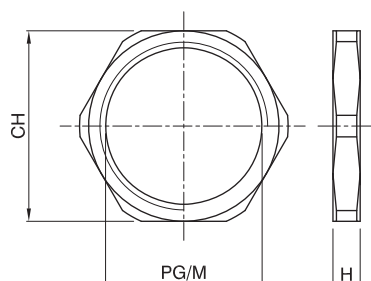
CODE	PG/1	PG/2
GW 76 865	PG11	PG13.5
GW 76 866	PG13.5	PG16
GW 76 867	PG16	PG21
GW 76 868	PG21	PG29
GW 76 869	PG29	PG36
GW 76 870	M20	M25
GW 76 871	M25	M32
GW 76 872	M32	M40
GW 76 873	M40	M50

METAL CLOSURE CAPS PG/M - IP65



CODE	PG/M	CH
GW 76 980	PG11	20
GW 76 981	PG13.5	22
GW 76 982	PG16	24
GW 76 983	PG21	32
GW 76 984	PG29	40
GW 76 985	PG36	52
GW 76 986	PG42	60
GW 76 975	M20	24
GW 76 976	M25	30
GW 76 977	M32	40
GW 76 978	M40	50
GW 76 979	M50	52

FIXING NUTS PG/M



CODE	PG/M	CH	H
GW 76 957	PG11	21	3
GW 76 958	PG13.5	23	3
GW 76 959	PG16	26	3
GW 76 960	PG21	32	3.5
GW 76 961	PG29	41	4
GW 76 962	PG36	51	5
GW 76 963	PG42	60	5
GW 76 951	M16	19	2.8
GW 76 952	M20	23	3
GW 76 953	M25	29	3.5
GW 76 954	M32	36	4
GW 76 955	M40	45	4.5
GW 76 956	M50	55	5.5

50 AC - ACCESSORIES FOR SURFACE-MOUNTING OF RIGID CONDUIT

TECHNICAL CHARACTERISTICS

Standard: EN 50086-1 (CEI 23-39); EN 50086-2-1 (CEI 23-54);
 EN 50086-2-2 (CEI 23-55) (when applicable); IEC EN 61386-1;
 IEC EN 61386-21; IEC EN 61386-22 (when applicable);
 Permanent application temperature: Min -5°C Max +60°C
 Insulation resistance: > 100 MΩ a 500 V

Degree of protection: IP 44; IP 55; IP 66

Installation temperature: Min +10°C Max +60°C

Dielectric rigidity: 2,000 V a 50 Hz

Glow Wire Test: 750°C (cable glands)

850°C (couplings)

BEHAVIOUR WITH CHEMICAL AND ATMOSPHERIC AGENTS

Agent	Saline solution	Acids		Bases		Solvents				Mineral oil	UV rays
		Concentrated	Diluted	Concentrated	Diluted	Hexane	Benzol	Acetone	Ethyl alcohol		
50 AC Supports	Resistant	Limited resistance	Limited resistance	Resistant	Resistant	Resistant	Resistant	Resistant	Resistant	Resistant	Limited resistance
50 AC Accessories	Resistant	Resistant	Resistant	Resistant	Resistant	Resistant	Limited resistance	Limited resistance	Resistant	Resistant	Resistant

PLASTIC AND METALLIC CABLE GLANDS FOR ATEX ENVIRONMENTS

Cable glands with PG and metric M pitch in insulating and metallic material with long thread. Suitable for use in zones **ZONE 1(G) 20(D)**.

TECHNICAL CHARACTERISTICS

Standard: EN 60079-0; EN 60079-1; EN 61241-0; EN 61241-1;

Directive ATEX 94/9/CE; EN 50262 for cable glands with metric thread;

DIN 40430 for cable glands with PG thread

Material: Nickel-plating brass (metallic cable glands)

Polyamide (plastic cable glands)

Permanent application and installation temperature:

Min -20°C Max +95°C

Insulation resistance: > 100 ΩW at 500 V (plastic cable glands)

Degree of protection: IP68 at 10 bar

Dielectric rigidity: 2000 V at 50 Hz (plastic cable glands)

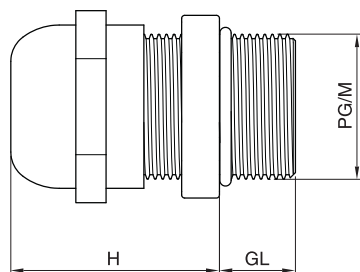
Glow wire test: 960°C - UL94 V0 (plastic cable glands)

BEHAVIOUR WITH CHEMICAL AND ATMOSPHERIC AGENTS

Agent	Saline solution	Acids		Bases		Solvents				Mineral oil	UV rays
		Concentrated	Diluted	Concentrated	Diluted	Hexane	Benzol	Acetone	Ethyl alcohol		
Plastic cable glands	Resistant	Limited resistance	Limited resistance	Resistant	Resistant	Resistant	Resistant	Resistant	Resistant	Resistant	Limited resistance
Metallic cable glands	Resistant	Resistant	Resistant	Resistant	Resistant	Resistant	Resistant	Resistant	Resistant	Resistant	Resistant

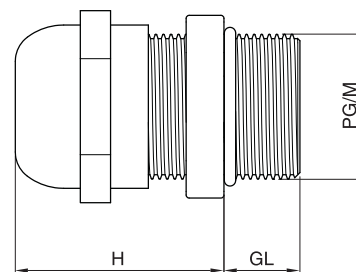
DIMENSION TABLES

PLASTIC CABLE GLANDS PG/M - IP68



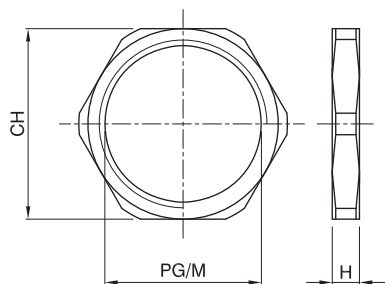
CODE	PG/M	H	GL
GW 52 101	PG7	21	8
GW 52 102	PG9	22	8
GW 52 103	PG11	25	8
GW 52 104	PG13.5	27	9
GW 52 105	PG16	28	10
GW 52 106	PG21	31	11
GW 52 107	PG29	39	11
GW 52 108	PG36	48	13
GW 52 109	PG42	49	13
GW 52 110	PG48	49	14
GW 52 121	M12	21	8
GW 52 122	M16	25	8
GW 52 123	M20	28	9
GW 52 124	M25	31	11
GW 52 125	M32	39	11
GW 52 126	M40	48	13
GW 52 127	M50	49	13
GW 52 128	M63	49	14

METALLIC CABLE GLANDS PG/M - IP68



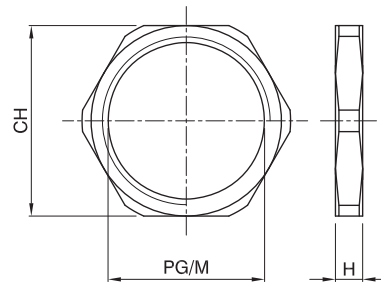
CODE	PG/M	H	GL
GW 76 901	PG7	19	10
GW 76 902	PG9	21	10
GW 76 903	PG11	24	10
GW 76 904	PG13.5	23	10
GW 76 905	PG16	23	10
GW 76 906	PG21	24	12
GW 76 907	PG29	29	12
GW 76 908	PG36	35	15
GW 76 909	PG42	37	15
GW 76 910	PG48	38	15
GW 76 921	M12	19	10
GW 76 922	M16	22	10
GW 76 923	M20	24	10
GW 76 924	M25	26	12
GW 76 925	M32	31	12
GW 76 926	M40	37	15
GW 76 927	M50	37	15
GW 76 928	M63	38	15

PLASTIC FIXING NUTS PG/M



CODE	PG/M	H	CH
GW 52 141	PG7	5	19
GW 52 142	PG9	5	22
GW 52 143	PG11	5	24
GW 52 144	PG13.5	6	27
GW 52 145	PG16	6	30
GW 52 146	PG21	7	36
GW 52 147	PG29	7	46
GW 52 148	PG36	8	60
GW 52 149	PG42	8	65
GW 52 150	PG48	8	70
GW 52 161	M12	5	17
GW 52 162	M16	5	22
GW 52 163	M20	6	27
GW 52 164	M25	7	36
GW 52 165	M32	7	41
GW 52 166	M40	7	50
GW 52 167	M50	8	60
GW 52 168	M63	8	75

METALLIC FIXING NUTS PG/M



CODE	PG/M	H	CH
GW 76 941	PG7	2.8	15
GW 76 942	PG9	2.8	18
GW 76 957	PG11	3	21
GW 76 958	PG13.5	3	23
GW 76 959	PG16	3	26
GW 76 960	PG21	3.5	32
GW 76 961	PG29	4	41
GW 76 962	PG36	5	51
GW 76 963	PG42	5	60
GW 76 943	PG48	5.5	64
GW 76 949	M12	2.8	15
GW 76 951	M16	2.8	19
GW 76 952	M20	3	23
GW 76 953	M25	3.5	29
GW 76 954	M32	4	36
GW 76 955	M40	4.5	45
GW 76 956	M50	5.5	55
GW 76 950	M63	6.0	70