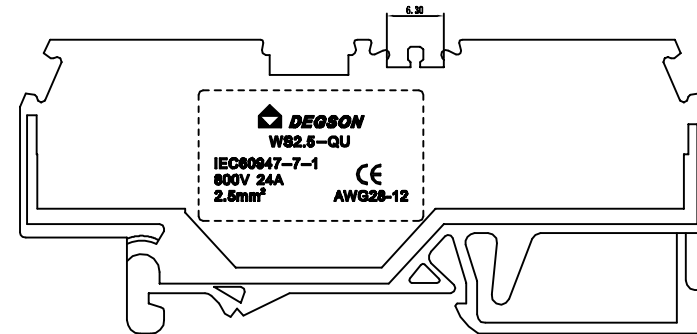
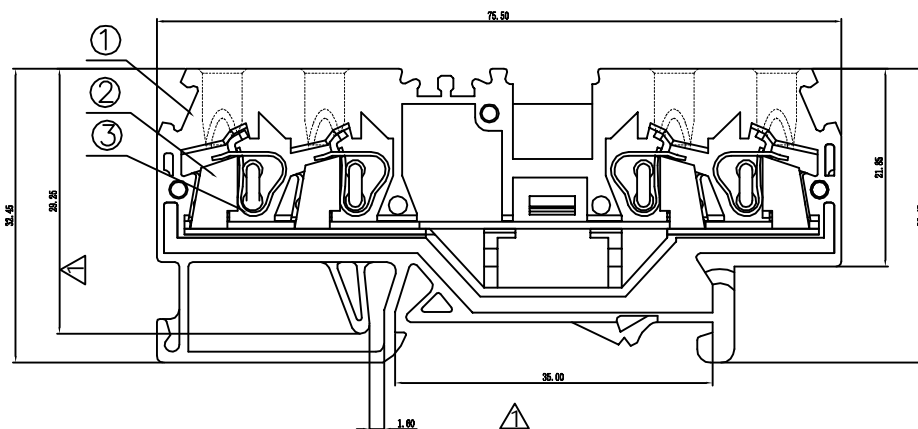
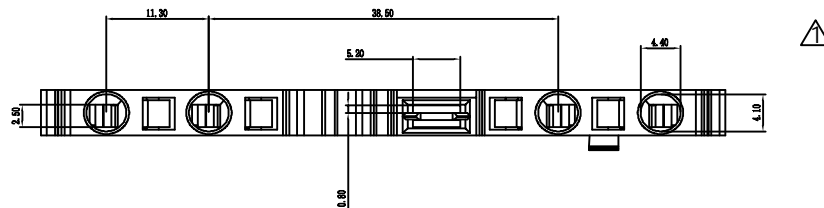


REVISION RECORD				
REV	ECO	DESCRIPTION	DRFT	DATE
△		结构修改	HXG	04/14/05



Notes:

1. Rated current/voltage: UL1059
600V/15A

IEC

800V/24A

2. Operation temperatures: -40°C ~ +105°C

3. Withstanding Voltage: AC8000V/1min

4. Insulation

Resistance: 1000MΩ /DC500V

5. Wire Range: 28~12AWG, 2.5mm²

Pitch range in mm			Nominal dimension range in mm						
	over 6	over 10		over 30	over 60	over 100	over 150		
to 6	to 10	to 24	to 30	to 60	to 100	to 150			
0.10	±0.15	±0.25	±0.2	±0.3	±0.5	±0.7	±1	0.05/10	

3	DG242-5.0-Shrapnel	X000000990(H)	4	Stainless steel									
2	WS2.5-QU-Current	6140B00010(H)	1	Copper	SnCe plat								
1	WS2.5-QU-Housing	6140A0Y01A(H)	1	PA66	UL94V-0								
ITEM	NAME OF PART	NO. OF PART	Q'TY	MATERIAL	NOTES								
DETAILED LISTS			DFTD LYK	DATE 02/29/08	 NAME WS2.5-QU-01P-1Y-00A (H)								
	TOLERANCES EXCEPT AS NOTED		CHKD	DATE									
	<table><tr><td>INCH</td><td></td></tr><tr><td>.0 ±</td><td>±</td></tr><tr><td>.00 ±</td><td>±</td></tr><tr><td>.000 ±</td><td>±</td></tr></table>		INCH			.0 ±	±	.00 ±	±	.000 ±	±	MPO	DATE
			INCH										
			.0 ±	±									
	.00 ±	±											
	.000 ±	±											
	APPLY	DATE											
	MATERIAL :												
	ANGLES ± 1°		G. E :										
		FINISH :											
		SCALE : 1:1											
		DO NOT SCALE DRAWING											
DRAWING NO. WS2.5-QU-E01			SIZE A3	REV T1 04/14/08									
			SHEET 1	OF 1									