

## REVISION RECORD

REV	ECN	DESCRIPTION	DRFT	DATE
-----	-----	-------------	------	------

## NOTES1:

UL Standard

- 1.Rated voltage/current : 300V / 30A
- 2.Withstanding voltage : AC1600V/1Min.
- 3.Torque value : 02P M3.5 , 5.0Lb.in  
≥03P M3.5, 7.02Lb.in
- 4.Wire range : 30~10AWG

IEC Standard

1. Pollution degree	2	2	3
Overvoltage category	II	III	III
Rate impulse voltage(KV)	6.0KV	6.0KV	6.0KV
Rate voltage(V)	1000V	630V	500V
Rate current(A)	32A		

- 2.Torque value : 02P M3.5, 0.57N·m  
≥03P M3.5, 0.8N·m
- 3.Wire range : 0.2~4mm<sup>2</sup>/6mm<sup>2</sup>(sol)

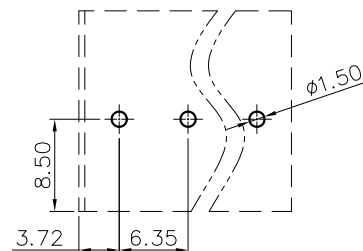
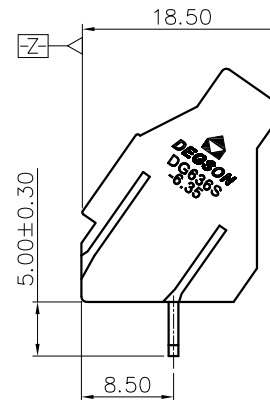
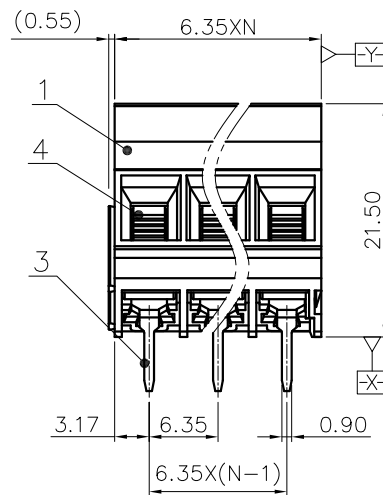
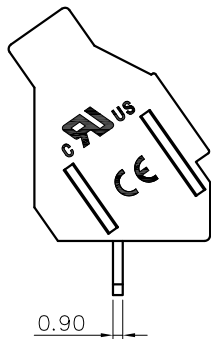
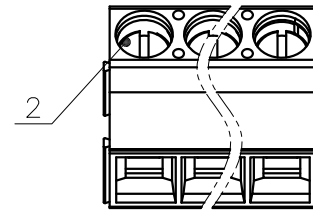
## NOTES2:

- 1.Dimension shall be interpreted per ASME Y14.5-2009
- 2.Pitch : 6.35mm, Poles : N=02~24P
- 3.Stripping length : 8~9mm
- 4.Operating temperature: -40°C~+105°C
- 5.Undimensioned tolerances:

Pitch range in mm		Nominal dimension range in mm						—	∩	□
Over 6 TO 10	Over 10 TO 24	Over 30 TO 60	Over 60 TO 100	Over 100 TO 150	Over 150 TO 300	Over 300 TO 600	Over 600 TO 1200	0.1/10	≤	±2'
±0.15	±0.20	±0.30	±0.30	±0.50	±0.70	±1.00	±1.30	±2'		

## 6.RoHS Compliance

DG636S - 6.35 - XXP - 1Y - 00A (H)  
(Series No.)(Pitch)(Poles)(Single Pitch)(Color):1.(Grey)  
(RoHS)  
00A-(Standard)  
2.(Blue)  
3.(Black)  
4.(Green)  
5.(Orange)  
6.(Red)  
7.(Transparent)  
8.(Yellow)  
9.(White)



PCB LAYOUT

DETACHED LISTS	PART NO.:	/				NINGBO DEGSON ELECTRICAL CO., LTD			
	APPD:	/				NAME: DG636S-6.35-XXP-1Y-00A(H)			
	CHKD:	/				TITLE: CUSTOMER DRAWING			
	DRFT:	/				REV			
THIRD ANGLE PROJECTION		DRAWING NO.:				SHEET			
		MM (INCH)				1/1			
		DO NOT SCALE DRAWING				SCALE			
						1:1			